



RABINDRA MAHAVIDYALAYA

Affiliated to the University of Burdwan
Champadanga, Hooghly, West Bengal, Pin.-712401

Estd.- 1971



Ref. No.....

Academic Year: 2018 – 2019

Date..... 26.05.2023

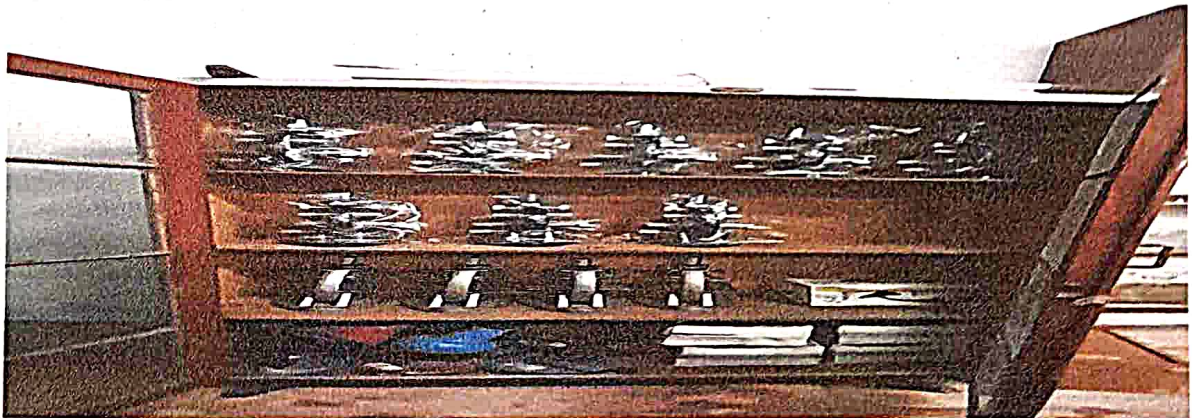
4.4.2. Procedure and Policies for Maintaining and Utilizing Physical Academic and Support facilities:


Laboratory: The IQAC coordinator collects requisitions for laboratory based departments. The heads of science departments meet to apportion funds amongst departments on their priority and requirements, and funds are allocated accordingly once it is recommended by the finance committee and finally, sanctioned by the governing body. For 2018-2019, the total funds allotted towards laboratory expenditure is ₹660000 (Including educational excursion expenditure) and the amount spent is ₹357972. Fullest utilization of funds could not be made due to time constraints.

Library: To enrich the Central Library with new CBCS books, the College authority creates a digital-based book lending and accepting module and to maintain the existing books by proper maintenance and upkeep. The Library sub-committee and finance sub-committee work together for a well-equipped library. The budget allocations are made towards entry of all books in the computer system, books are purchased, computers and printers are provided and cleaning, dusting and disinfecting process are carried out during the year. Budgeted amount ₹2,30,000/- and actual expenditure incurred for books ₹2,47,650/- and allied expenses ₹92,983/-.



Department of Zoology




(DR. PRASANTA BHATTACHARYYA)
Principal
RABINDRA MAHAVIDYALAYA
Champadanga, Hooghly (W.B)



RABINDRA MAHAVIDYALAYA

Affiliated to the University of Burdwan
Champadanga, Hooghly, West Bengal, Pin.-712401

Estd.- 1971

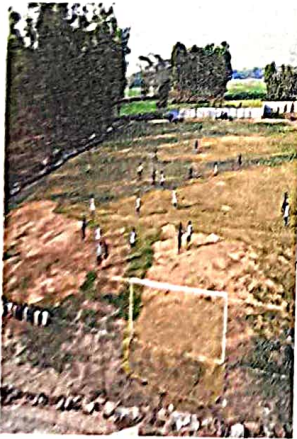



Ref. No.....

Date..... 26/05/23



Sports Complex: The IQAC makes provisions in the financial budget through the Bursar and Finance Committee for proper maintenance and upkeep of the play-ground and sports and gymnasium equipments throughout the academic session. Routine activities such as college sports, inter-departments football and cricket tournaments, College sports, badminton championship and participation in Inter College and District Level athletics meet. The budget allocation for games and sports are included in the laboratory expenditure budget and actual expenditure during 2018-19 was ₹64624. The regular maintenance of the sports ground, badminton court and basketball court are maintained by the college.




(DR. P. SASANTA BHATTACHARYYA)
Principal
RABINDRA MAHAVIDYALAYA
Champadanga, Hooghly (W.B)



RABINDRA MAHAVIDYALAYA



Affiliated to the University of Burdwan
Champadanga, Hooghly, West Bengal, Pin.-712401

Estd.- 1971


Ref. No.....

Date..... 26/05/23.....



Computers: The College authority is aware about equipping each and every department, cell, library and laboratories with adequate number of computers and laptops. The departments, which are solely allotted with classrooms and staff rooms and departmental library and laboratory, they are provided with computer sets along with proper arrangements of furniture and fixtures. The humanities departments are provided with laptops. In 2018-2019, the budget allocation for computers was ₹95000 and the computer related expenses budget was ₹60000 while actual expenditure was ₹30219, for Website renewal ₹5428, and for internet access ₹14572.




(DR. PRASANTA BHATTACHARYYA)
Principal
RABINDRA MAHAVIDYALAYA
Champadanga, Hooghly (W.B)